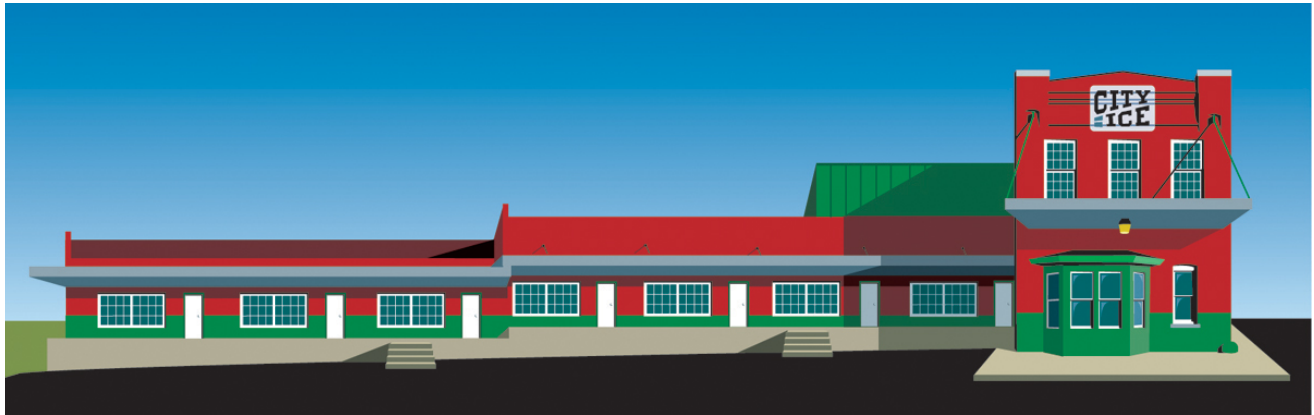


# Available SPRING 2008

N.E. CORNER OF 21<sup>ST</sup> & CAMPBELL STREETS

# City Ice

## Artist Work Lofts



- INDUSTRIAL FLEX SPACE, WILL FINISH TO SUIT.
- 600-2,600 SQUARE FT. SPACES IN HISTORIC BLDG.
- PRIVATE INDIVIDUAL STREET LEVEL ENTRANCES.
- OFF-STREET PARKING AT YOUR DOOR.
- RENTS STARTING AT \$550 PER MONTH.
- ON HOSPITAL HILL JUST EAST OF CROWN CENTER & THE CROSSROADS DISTRICT.

**DAVID DUMAY**  
**DIRECT: 913-648-0800**  
**MOBILE: 816-820-4105**

**KEMPER • DUMAY**  
REAL ESTATE, LLC

6400 W 95th Street, Suite 201, Overland Park, KS 66212